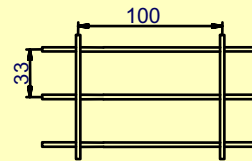


壓鎖鋼格板

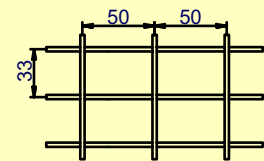
因其表面整潔美觀有極好的橫向支撐，低的自重及低的能耗，壓鎖鋼格板是非常受歡迎的鋼格板。它具有與壓焊鋼格板同樣的強度、使用壽命和開敞性，接點不需焊接，而是採用極大的壓力迫使橫杆變形而鎖定于負載扁鋼之中，或是將配合適當的開槽和扁鋼結合在一起，通過強大壓力將橫杆深壓入開槽的負載扁鋼中，從而達到永久性的鎖固。

PRESSURE-LOCKED GRATING

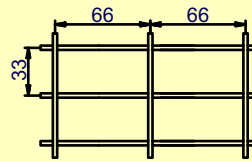
Pressure-locked grating is often desirable because of its clean, smooth look, excellent lateral support, light weight and cost-efficient. It exhibits the same strength, long life and openness as pressure-welded grating. Instead of welding the joints, however, tremendous hydraulic pressure is used to force cross bar deformation and locking into bearing bar, or bond the two close-tolerance slotted bars together, then force cross bar deep into the notched bearing bar by tremendous hydraulic pressure, which can achieve permanent locking.



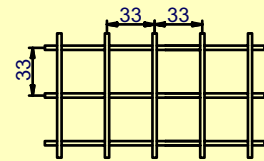
33/100L



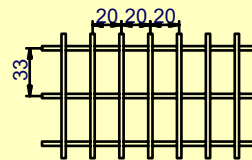
33/50L



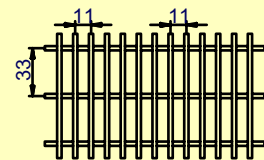
33/66L



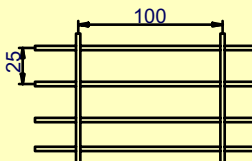
33/33L



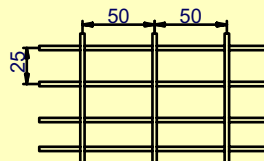
33/20L



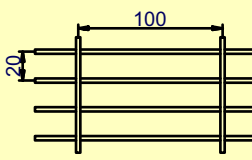
33/11L



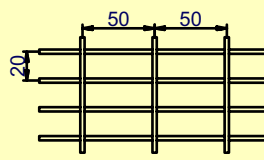
25/100L



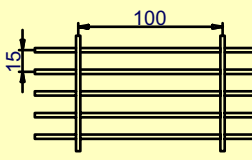
25/50L



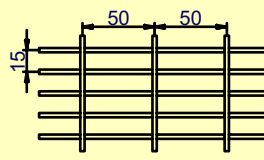
20/100L



20/50L



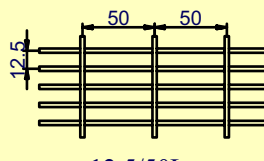
15/100L



15/50L



12.5/100L



12.5/50L